



227 BATH ROAD SLOUGH, SL1 5GA

Welcome to New Eaton House, a modern flat located on Bath Road in Slough. This delightful one double bedroom apartment offers a perfect blend of comfort and contemporary living. Spanning an impressive 399 square feet, the property features an open-plan living, dining, and kitchen area, ideal for both relaxation and entertaining.

£230,000



1



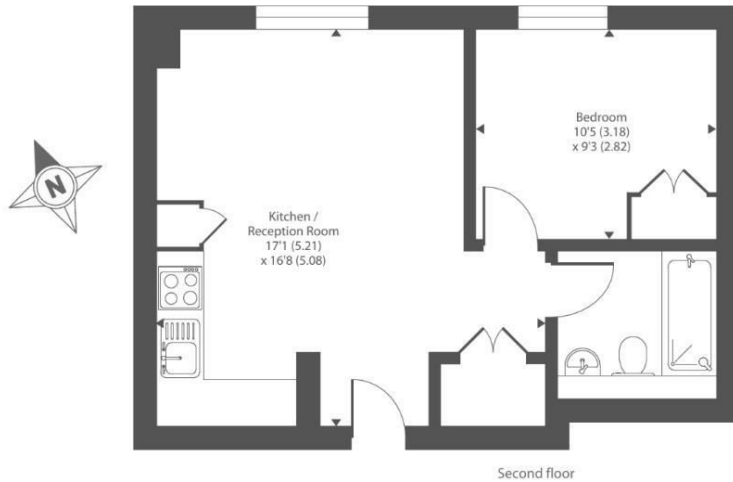
1



1

EPC D

Approximate Area = 399 sq ft / 37.1 sq m
For identification only - Not to scale

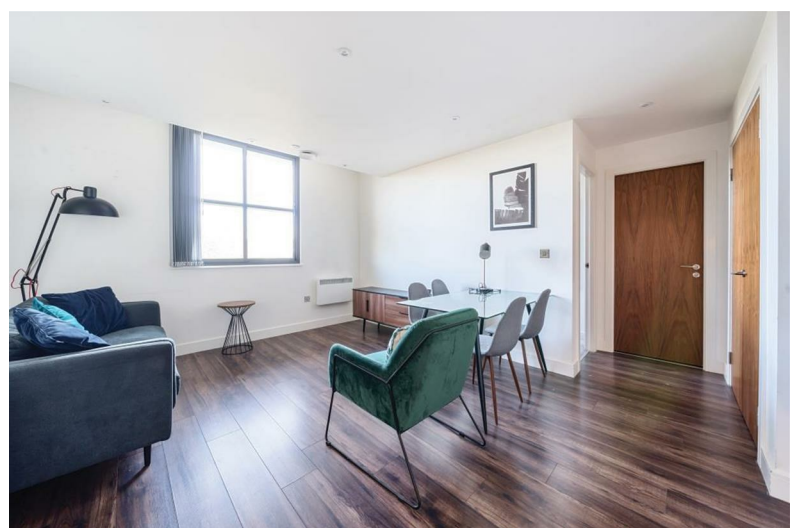


The high-spec kitchen is equipped with integrated appliances, making it a joy for any home cook. The well-presented modern bathroom suite adds to the appeal, ensuring that every aspect of this apartment meets the needs of today's discerning buyer. Built in 2019, this purpose-built flat benefits from the latest design and construction standards, providing a fresh and inviting atmosphere.

For those who require parking, the property includes allocated space for one vehicle, a valuable feature in this bustling area. New Eaton House is conveniently situated within walking distance of local amenities, ensuring that everything you need is just a short stroll away. Additionally, Slough and Burnham stations are nearby, offering excellent transport links for commuters.

With 144 years remaining on the lease, this apartment presents a fantastic opportunity for first-time buyers or investors looking for a modern property in a prime location. Don't miss the chance to make this stylish flat your new home.

- ONE DOUBLE BEDROOM APARTMENT
- OPEN PLAN LIVING, DINER AND KITCHEN
- HIGH SPEC KITCHEN WITH INTEGRATED APPLIANCES
- ALLOCATED PARKING FOR ONE VEHICLE
- CLOSE TO SLOUGH AND BURNHAM STATION
- WALKING DISTANCE TO LOCAL AMENITIES
- MODERN BATHROOM SUITE
- WELL PRESENTED AND MODERN APARTMENT
- NEW BUILD IN 2019
- 144 LEASE YEARS REMAINING



**cameron
king**
ESTATE AGENTS

411 Bath Road, Slough, SL1 5QL
t: 01628 667442
e: sales@cameronking.co.uk



rightmove

Zoopla

PrimeLocation.com